



# 600 SC RUPSHOOGWERKER

# 600 SC NACELLE CHENILLE

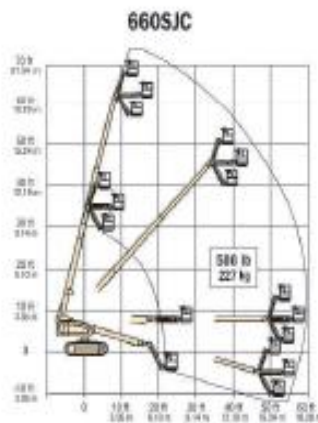
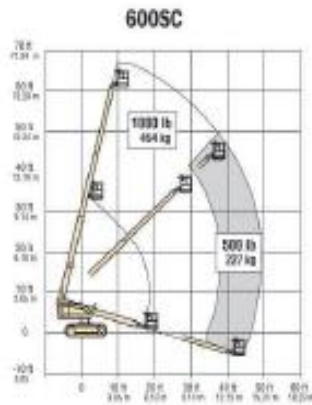


Model

## 600 Crawler Series

TELESCOPIC  
BOOM LIFTS

### Specifications



### Reach

|                             |                                     |
|-----------------------------|-------------------------------------|
| Platform Height             | 60 ft 3 in. (18.36 m)               |
| 660SJC                      | 66 ft 8 in. (20.32 m)               |
| Horizontal Outreach         | 600SC: 49 ft 6 in. (15.09 m)        |
| 660SJC                      | 56 ft 9 in. (17.30 m)               |
| Swing                       | 360 Degrees Continuous              |
| Platform Capacity           | Unrestricted: 500 lb (227 kg)       |
| Restricted (600SC Only)     | 1,000 lb (454 kg)                   |
| Platform Rotator            | 600SC: 180 Degrees Hydraulic        |
| 660SJC                      | 180 Degrees Hydraulic               |
| Jib (Range of Articulation) | 660SJC Only: 132 Degrees (+71, -61) |

### Dimensions

|                     |                              |
|---------------------|------------------------------|
| A. Platform Size    | 36 x 96 in. (0.91 x 2.44 m)  |
| B. Overall Width    | 8 ft 2 in. (2.49 m)          |
| C. Tailswing        | 3 ft 8 in. (1.12 m)          |
| D. Stowed Height    | 8 ft 5 in. (2.57 m)          |
| E. Stowed Length    | 600SC: 27 ft 11 in. (8.51 m) |
| 660SJC              | 33 ft 6 in. (10.21 m)        |
| F. Ground Clearance | 15 in. (38 cm)               |

### Weight\*

|        |                       |
|--------|-----------------------|
| 600SC  | 22,500 lb (10,206 kg) |
| 660SJC | 27,100 lb (12,293 kg) |

### Max. Ground Bearing Pressure

|        |                                      |
|--------|--------------------------------------|
| 600SC  | 5.45 psi (0.383 kg/cm <sup>2</sup> ) |
| 660SJC | 6.5 psi (0.457 kg/cm <sup>2</sup> )  |

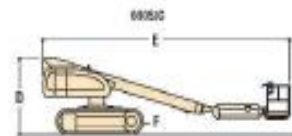
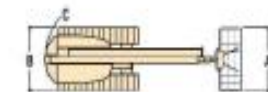
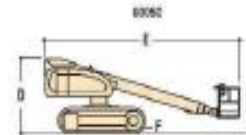
\*Certain options or country standards will increase weight.

### Chassis

|                                 |                    |
|---------------------------------|--------------------|
| Drive Speed                     | 1.6 mph (2.6 kmph) |
| Gradeability                    | 55%                |
| Turning Radius                  | Zero               |
| Type of Tracks                  | Steel              |
| Optional detachable rubber pads |                    |
| Tracks Width                    | 20 in. (51 cm)     |

### Power Source

|                     |                   |                   |
|---------------------|-------------------|-------------------|
| Diesel Engine       | Deutz F4M1011L    | 65 hp (48 kW)     |
| Diesel Engine       | Caterpillar 3044C | 63.3 hp (47.2 kW) |
| Fuel Tank Capacity  |                   | 40 gal. (151 L)   |
| Hydraulic Reservoir |                   | 32 gal. (121 L)   |
| Auxiliary Power     |                   | 12V DC            |



### The JLG 1 & 5 Warranty

JLG Industries, Inc. backs our products with our exclusive "1 & 5" Warranty. We provide coverage on all products for one (1) full year, and cover all specified major structural components for five (5) full years. Due to continuous product improvements, we reserve the right to make specification and/or equipment changes without prior notification. These machines meet or exceed applicable OSHA Regulations in 29 CFR 1910.67, 29 CFR 1926.453, and ANSI A92.5-1992 as originally manufactured for intended applications.