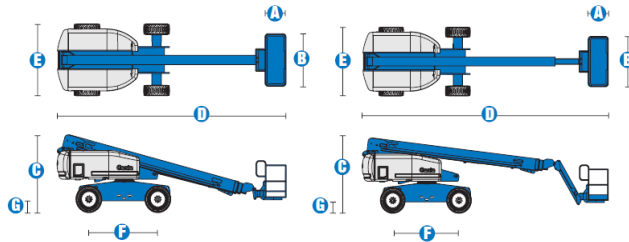




## SELF-PROPELLED TELESCOPIC BOOMS S™-60 & S™-65

### Specifications



MODELS	S™-60		S™-65	
	Metric	US	Metric	US
Working height maximum*	20.30 m	66 ft	21.80 m	71 ft
Platform height maximum	18.30 m	60 ft	19.80 m	65 ft
Horizontal reach maximum	15.50 m	50 ft 10 in	17.10 m	56 ft 2 in
Below ground reach	1.70 m	5 ft 7 in	2.71 m	8 ft 11 in
<b>A</b> Platform length - 8 ft model	91 cm	3 ft	91 cm	3 ft
Platform length - 6 ft model	76 cm	2 ft 6 in	76 cm	2 ft 6 in
<b>B</b> Platform width - 8 ft model	2.44 m	8 ft	2.44 m	8 ft
Platform width - 6 ft model	1.83 m	6 ft	1.83 m	6 ft
<b>C</b> Height - stowed	2.72 m	8 ft 11 in	2.72 m	8 ft 11 in
<b>D</b> Length - stowed	8.51 m	27 ft 11 in	9.5 m	31 ft 2 in
Length - transport (jib tucked under)	—	—	7.60 m	25 ft
<b>E</b> Width (with standard tyres)	2.49 m	8 ft 2 in	2.49 m	8 ft 2 in
<b>F</b> Wheelbase	2.5 m	8 ft 2.5 in	2.5 m	8 ft 2.5 in
<b>G</b> Ground clearance - centre	37 cm	1 ft 2.5 in	37 cm	1 ft 2.5 in

PRODUCTIVITY				
Lift capacity	227 kg	500 lbs	227 kg	500 lbs
Platform rotation	160°	160°	160°	160°
Vertical jib rotation	—	—	135°	135°
Turntable rotation	360° continuous		360° continuous	
Turntable tailswing	1.22 m	4 ft	1.22 m	4 ft
Drive speed - 2WD stowed	6.4 km/h	4.0 mph	6.4 km/h	4.0 mph
Drive speed - 4WD stowed	4.8 km/h	3.0 mph	4.8 km/h	3.0 mph
Drive speed - raised or extended	1.1 km/h	0.68 mph	1.1 km/h	0.68 mph
Gradeability** stowed - 2WD	30%	30%	30%	30%
Gradeability** stowed - 4WD	45%	45%	45%	45%
Turning radius - inside	2.36 m	7 ft 9 in	2.36 m	7 ft 9 in
Turning radius - outside	5.54 m	18 ft 2 in	5.54 m	18 ft 2 in
Controls	12 V DC proportional		12 V DC proportional	
Tyres - RT Lug	355/55D 625		355/55D 625	

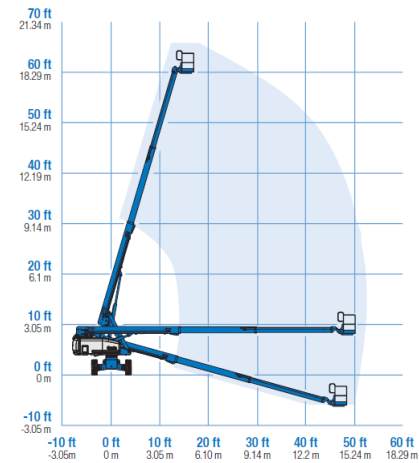
POWER				
Power source	Ford DSG-423 4 cylinder petrol/LPG 75 hp (56 kW) Deutz D 2011 L03i cylinder diesel 48 hp (36 kW) Perkins 404D-22 4 cylinder diesel 51 hp (38 kW)			
Auxiliary power unit	12 V DC	12 V DC	12 V DC	12 V DC
Hydraulic tank capacity	170 L	45 gal	170 L	45 gal
Fuel tank capacity	132 L	35 gal	132 L	35 gal

WEIGHT***				
2WD (CE air tyres)	9,308 kg	20,520 lbs	10,024 kg	22,100 lbs
4WD (CE air tyres)	9,385 kg	20,690 lbs	10,102 kg	22,270 lbs
CE Foam Filled tyres	add 343 kg	add 756 lbs	add 343 kg	add 756 lbs

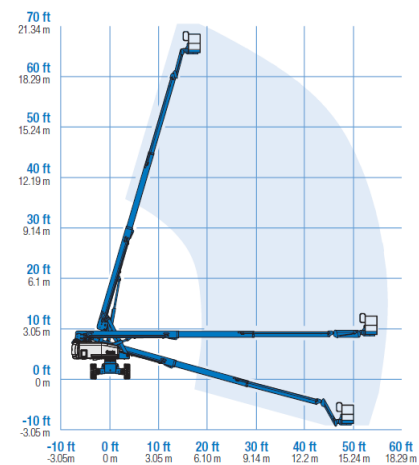
#### STANDARDS COMPLIANCE

CE EN280, PB-10-611-03

#### RANGE OF MOTION S™-60



#### RANGE OF MOTION S™-65



\* The metric equivalent of working height adds 2 m to platform height, U.S. adds 6 ft to platform height.

\*\* Gradeability applies to driving on slopes, see Operator's Manual for details regarding slope ratings.

\*\*\* Weight will vary depending on options and/or country standards.