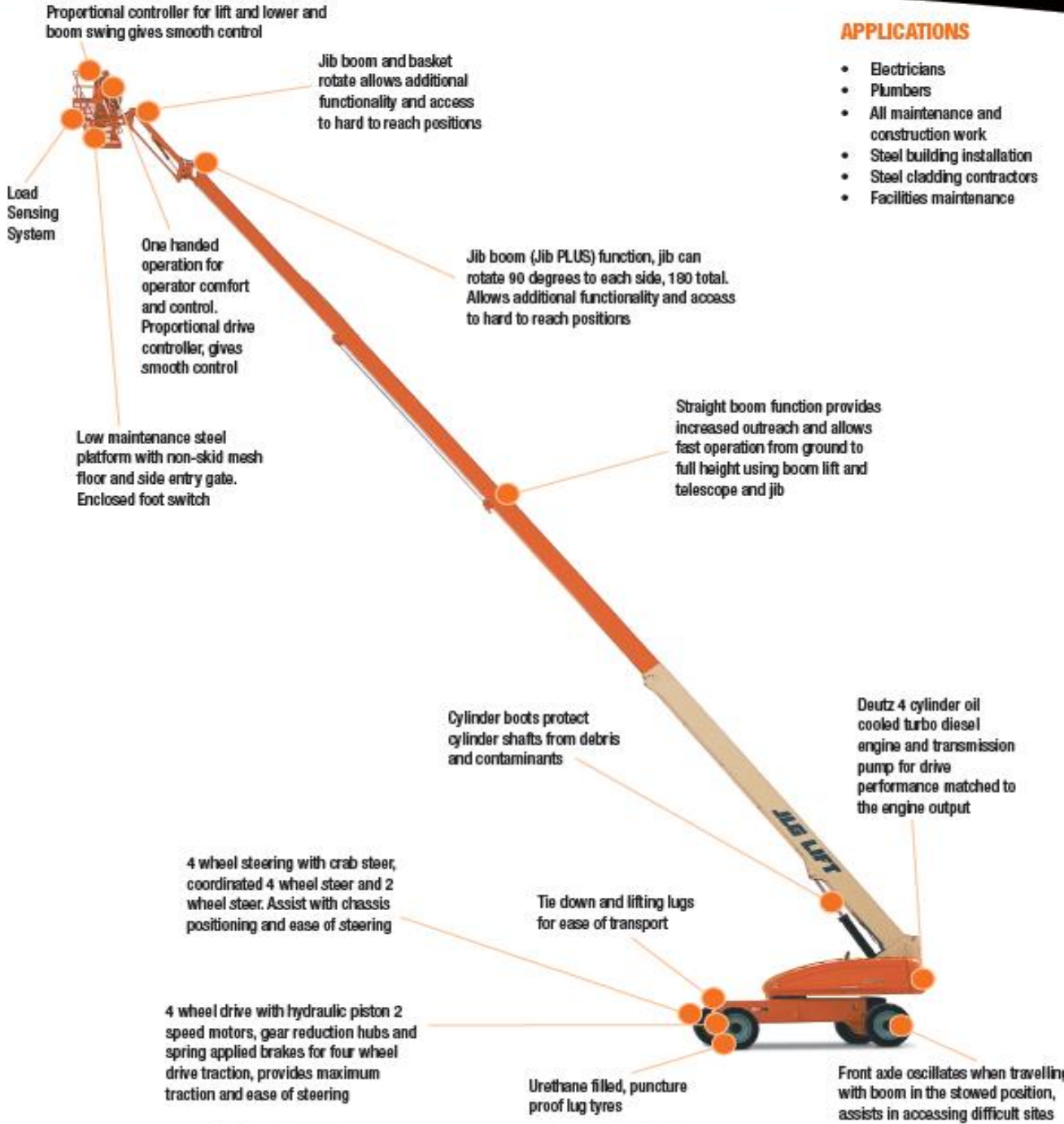




1350SJP Telescopic Boom Lift



APPLICATIONS

- Electricians
- Plumbers
- All maintenance and construction work
- Steel building installation
- Steel cladding contractors
- Facilities maintenance



1350SJP Telescopic Boom Lift

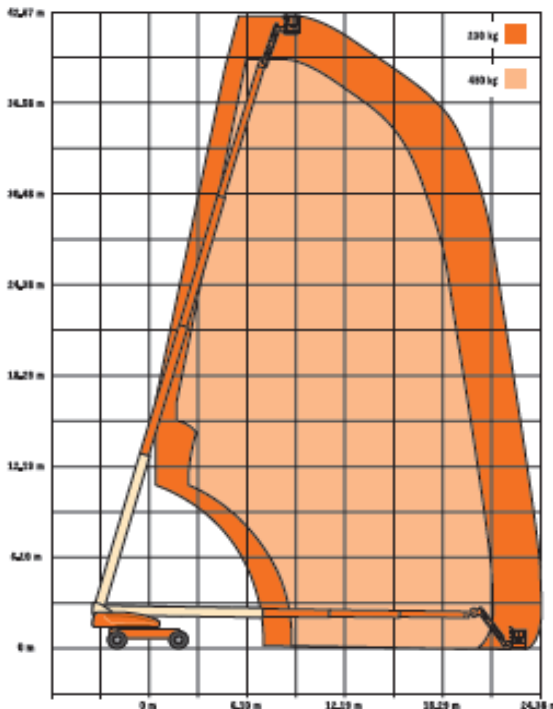


QUESTIONS TO ASK

- What are the ground conditions in the work area?
- What are the site conditions travelling around the site?
- What is the working height needed for the job?
- What is the outreach required for the job?
- Do you need an extension lead outlet in the platform?
- Will an inbuilt Miller 5.5kVA generator make the job easier?

KEY SELLING POINTS

- Smooth control, proportional hydraulic 4 wheel drive, with two speed ranges
- Proportional lift and swing controls at the platform for fast functionality
- Oscillating front steer axle with the boom lowered in the travel position, assists 4 wheel drive traction
- Extending axles and 4 wheel steer, and crab steer
- Jib boom and basket rotate
- Jib PLUS feature allows jib rotation each side of centre line
- Cylinder boots protect cylinder rods from overspray and contaminants
- Large lug pattern urethane filled tyres
- Multi axis 5 x 5 degree level sensor
- Plug in JLG analyser at platform and base to indicate system functions for servicing and adjustment
- Deutz Engine TD2011 L04 turbo. High speed, 4 cylinder, liquid (oil cooled) engine with pre-glow and post-glow feature reduces emissions



SPECIFICATIONS

Performance:

| | |
|-----------------------------|-----------------|
| Platform Height (max.) | 41.15m |
| Working Height | 43.3m |
| Platform Rotation Angle | 180° |
| Jib Plus Rotation Angle | 180° |
| Jib Raise Angle | 75° |
| Jib Lower Angle | 55° |
| Jib Articulation Range | 130° |
| Maximum Horizontal Outreach | 24.38m |
| Platform Capacity | 230kg/450kg |
| Swiveling Angle | 360° Continuous |
| Level Sensor | 5 x 5 |

Dimensions:

| | |
|----------------------------------|--------|
| Stowed Length | 11.86m |
| Stowed Height | 3.05m |
| Overall Width | 2.49m |
| Overall Width with Extended Axle | 3.82m |
| Wheelbase | 3.81m |
| Ground Clearance | 0.30m |
| Platform Width | 2.44m |
| Platform Length | 0.91m |
| Overall Jib Length | 2.44m |
| Tailswing | 1.67m |
| Axle Oscillation Standard | Std |

Power:

| | |
|-----------------|------------------|
| Power Source | Diesel |
| Engine Make | Deutz |
| Engine Model | TD2011 L04 Turbo |
| Engine Power | 55kW |
| DC Voltage | 12V |
| DC Power | 1400CCA |
| Genset | 5.5kVA Miller |
| Auxiliary Power | 12V Pump |

Travel:

| | |
|---------------------------------|------------------------|
| Tyre Size | 445/50 D 710 |
| Tyre Type | Urethane Filled |
| Inside Turn Radius | 4.39/2.44m |
| Outside Turn Radius | 6.86m |
| Turn Radius with Extended Axle | 5.89m |
| Drive Speed Elevated | 0.5km/h |
| Gradeability with 4WD | 45% |
| Maximum Ground Bearing Pressure | 7.52kg/cm ² |

Weights and Capabilities:

| | |
|-------------------------|------------|
| Fuel Tank Capacity | 117.35 Ltr |
| Hydraulic Tank Capacity | 208.2 Ltr |
| Operating Weight | 20,400kg |