

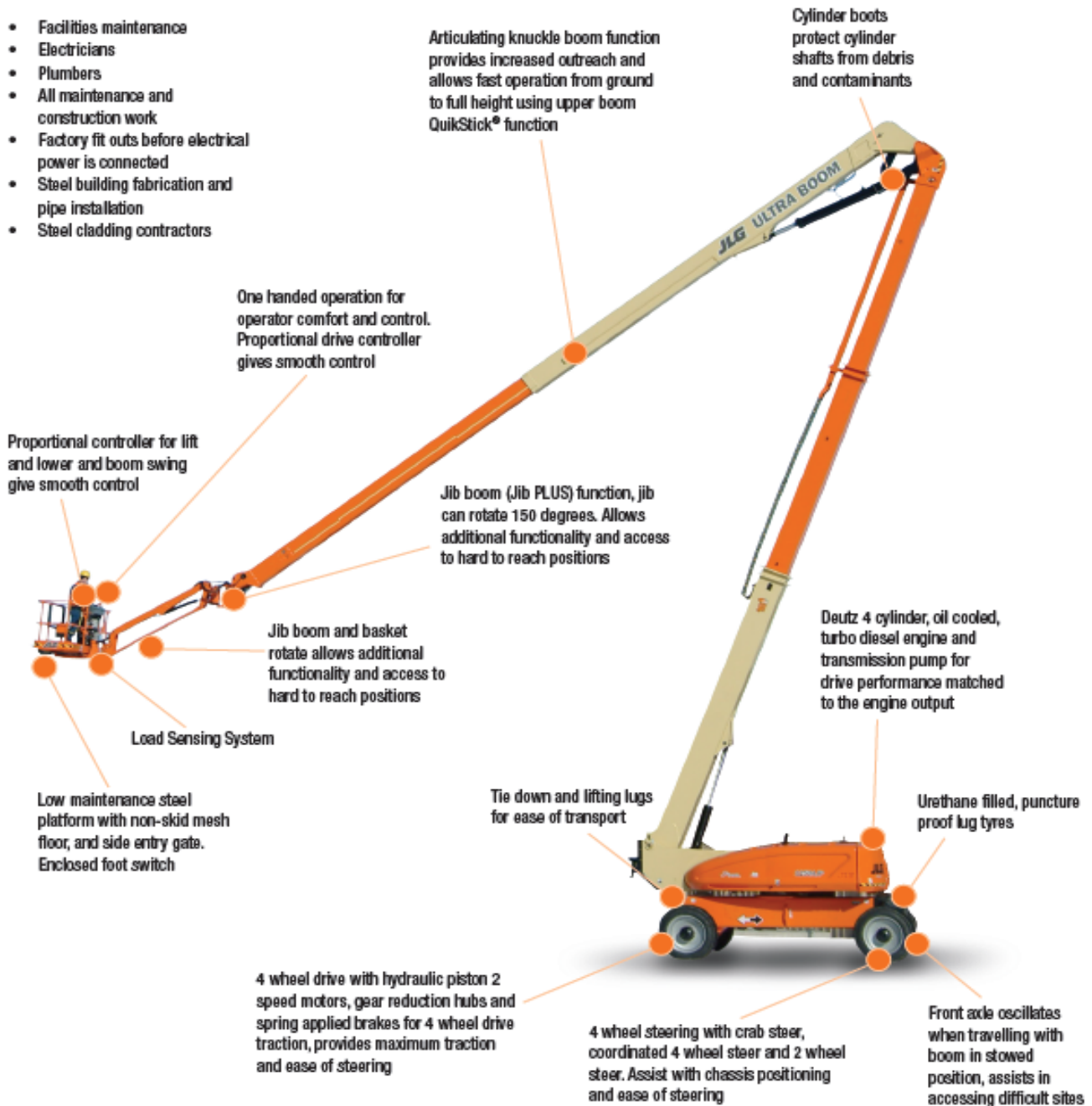


# 1250AJP Articulating Boom Lift



## APPLICATIONS

- Facilities maintenance
- Electricians
- Plumbers
- All maintenance and construction work
- Factory fit outs before electrical power is connected
- Steel building fabrication and pipe installation
- Steel cladding contractors





# 1250AJP Articulating Boom Lift

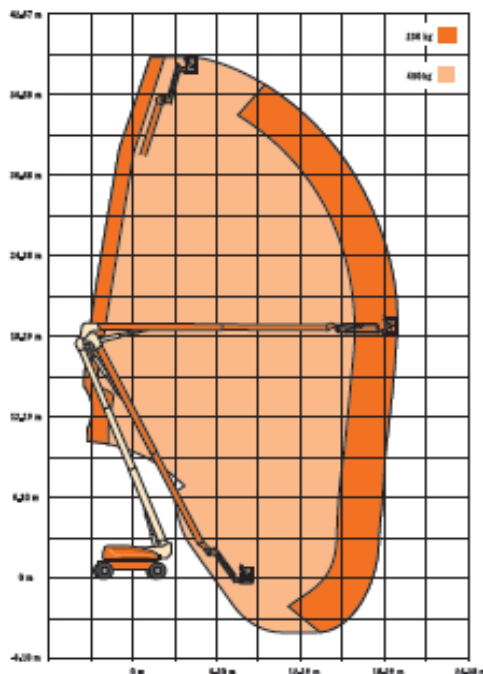


## QUESTIONS TO ASK

- What are the ground conditions in the work area?
- What are the site conditions travelling around the site?
- What is the working height needed for the job?
- What is the outreach required for the job?
- What is the up and over height needed to reach the job?
- Do you need an extension lead outlet in the platform?

## KEY SELLING POINTS

- Smooth control, proportional hydraulic 4 wheel drive, with two speed ranges
- Proportional lift and swing controls at the platform for fast functionality
- Oscillating front steer axle with the boom lowered in the travel position, assists 4 wheel drive traction
- Extending axles and 4 wheel steer, and crab steer
- Jib boom and basket rotate
- Jib PLUS feature allows jib rotation each side of centre line
- Knuckle boom arrangement allows fast operating speeds, QuikStick® function allows ground to full height operation with one controller
- Cylinder boots protect cylinder rods from overspray and contaminants
- Large lug pattern urethane filled tyres
- Multi axis 5 x 3 degree level sensor
- Plug in JLG analyser at platform and base to indicate system functions for servicing and adjustment
- Deutz Engine TD2011 L04 turbo. High speed, 4 cylinder, liquid (oil cooled) engine with pre-glow and post-glow feature reduces emissions



## SPECIFICATIONS

### Performance:

Platform Height (max)	38.10m
Working Height	40.10m
Platform Rotation Angle	180°
Jib Plus Rotation Angle	125°
Jib Raise Angle	75°
Jib Lower Angle	55°
Jib Articulation Range	130°
Maximum Horizontal Outreach	19.25m
Platform Capacity	230kg/450kg
Swinging Angle	360° Continuous
Level Sensor	5 x 3

### Dimensions:

Stowed Length	11.46m
Stowed Height	3.05m
Overall Width	2.49m
Overall Width with Extended Axle	3.81m
Wheelbase	3.81m
Ground Clearance	0.30m
Platform Width	2.44m
Platform Length	0.91m
Overall Jib Length	2.44m
Tailswing	2.26m

### Power:

Power Source	Diesel
Engine Make	Deutz
Engine Model	TD2011 L04 Turbo
Engine Power	55kW
Engine Fuel	Diesel
DC Voltage	12V
DC Power	1400CCA
Genset	5.5kW Miller
Auxiliary Power	12V Pump

### Travel:

Tyre Size	445/50 D 710
Tyre Type	Urethane Filled
Inside Turn Radius	4.39m
Outside Turn Radius	6.86m
Turn Radius with Axle Extended	5.89m
Drive Speed Elevated	0.5km/h
Gradeability with 4WD	45%
Maximum Ground Bearing Pressure	7.03kg/cm <sup>2</sup>

### Weights and Capabilities:

Fuel Tank Capacity	117.0 Ltr
Hydraulic Tank Capacity	202.0 Ltr
Operating Weight	20,080kg