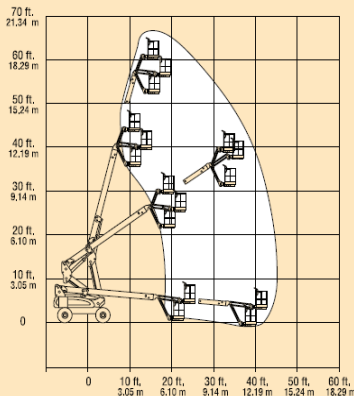


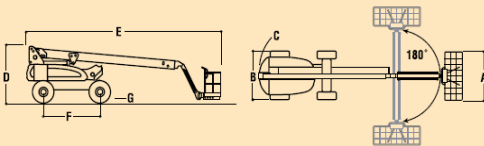


JLG MODEL E600J, M600J & E600JP, M600JP



REACH SPECIFICATIONS

Platform Height	60 ft. (18.29 m)
Horizontal Outreach (Jib)	43 ft. 3 in. (13.19 m)
(JibPLUS)	44 ft. 5 in. (13.54 m)
Swing	400 Degrees Non-Continuous
Platform Capacity	500 lb. (237 kg)
Platform Rotator	180 Degrees Hydraulic
Jib (range of articulation)	145 Degrees (+75,-70) Vertical
(JibPLUS)	180 Degrees Horizontal



DIMENSIONAL DATA

A. Platform Size	30 x 72 in. (0.76 x 1.83 m)
B. Overall Width	8 ft. (2.44 m)
C. Tailswing	4 ft. (1.22 m)
D. Stowed Height	8 ft. 4 in. (2.54 m)
E. Stowed Length (Jib)	30 ft. 9 in. (9.37 m)
(JibPLUS)	33 ft. 4 in. (10.15 m)
F. Wheelbase	9 ft. (2.74 m)
G. Ground Clearance (Axle)	12 in. (30 cm)
(Chassis)	23 in. (58 cm)
Gross Vehicle Weight*(Jib)	14,900 lb. (6,759 kg)
(JibPLUS)	15,200 lb. (6,895 kg)
Ground Bearing Pressure	52 PSI (3.7 kg/cm ²)

CHASSIS

Drive Speed	3.0 mph (4.8 kph)
Gradeability	30%
Turning Radius (Inside)	4 ft. (1.22 m)
Turning Radius (Outside)	15 ft. 4 in. (4.67 m)
Axle Oscillation	8 in. (20 cm)
Tire Size/Type	14 x 22.5 Non-Marking Pneumatic

POWER SOURCE

Electrical System	48V DC
Batteries	8 x 6V 415 amp/hr
Drive Motors	Dual Electric Traction
Brakes	Automatic Spring Applied Multiple Discs
Hydraulic Motor/Pump	Series Wound Motor/Gear Pump
Hydraulic Reservoir	15 gal. (56.78 L)
Generator Set (M600J, M600JP)	Fully Automatic, 45 amp
	Yanmar 6 hp Diesel Engine
Engine Fuel Tank (M600J, M600JP)	13 gal. (49.3 L)
Generator Noise Level (at max. rpm)	70 dBA @ 7 meters

*Certain options or country standards will increase weight.

PERFORMANCE FEATURES

Standard Features

- 6 ft. (1.83 m) Articulating Jib
- 6 ft. (1.83 m) Vertical and Lateral Articulating Jib (E600JP and M600JP Only)
- Operator Tool Tray
- 30 in. x 72 in. (.76 x 1.83 m) side entry
- Low Mount Platform
- Inward Self-Closing Swing Gate
- 180 Degree Hydraulic Platform Rotator
- Platform Console Machine Status Light Panel*
- 110V-AC GFI Receptacle in the Platform
- 5 Degree Tilt Alarm/Indicator Light
- Hourmeter
- Battery Condition Indicator
- Lifting/Tie Down Lugs
- 14 x 22.5 Non-Marking Pneumatic Tires
- 400 Degree Non-Continuous Rotation
- Removable Battery Box
- Oscillating Axle
- Manual Descent
- Automatic Traction Control (ATC)
- SCR Automatic Battery Charger
- All Motion Alarm

*Provides indicator lights at platform control console for system distress, low fuel, 5 degree tilt light, and foot switch status.

Individual Options:

- 30 x 48 in. Platform
- Mesh to Toprail – Bolt-on Aluminum
- 1/2 in. Airliner to Platform
- 14 x 22.5 Non-Marking Foam Filled Tires
- 1200W Inverter
- Hostile Environment Kit¹
- EE Rating²
- Tow Package³
- Light Package⁴
- Flashing Amber Beacon
- Platform Work Lights
- All Motion Alarm

1. Includes console cover, boom wipers and cylinder bellows.
2. Not available on Multi-Powered models.
3. 2WD only.
4. Includes head and tail lights, and platform worklights.

The JLG "1 & 5" Warranty

JLG Industries, Inc. backs our products with our exclusive "1 & 5" Warranty. We provide coverage on all products for one (1) full year, and cover all specified major structural components for five (5) full years. Due to continuous product improvements, we reserve the right to make specification and/or equipment changes without prior notification. This machine meets or exceeds applicable OSHA Regulations in 29 CFR 1910.67, 29 CFR 1926.453 and ANSI A92.5-1992 as originally manufactured for intended applications.

JLG Industries, Inc.

1 JLG Drive, McConnellsburg, PA 17233-9533
 Telephone 717-485-5161 Toll-free in US 877-JLG-LIFT
 Fax 717-485-6417
 www.jlg.com

Printed in USA
 FORM NO.: SS-E600-0303-10M
 PART NO.: 3131027
 R020501

